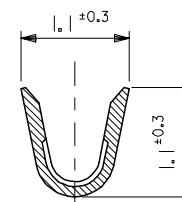
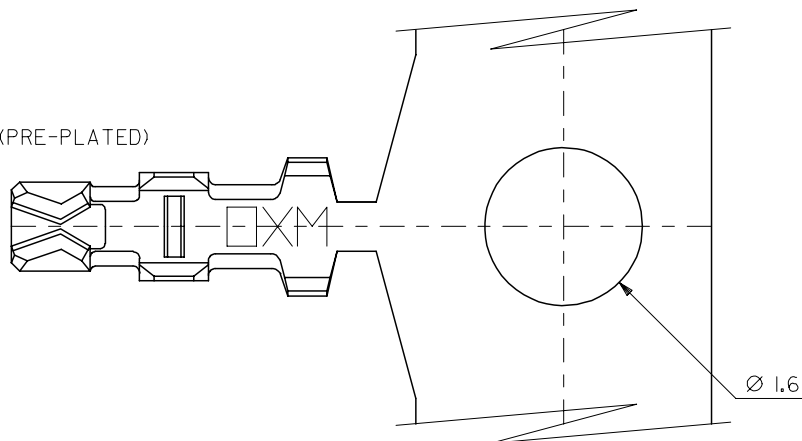


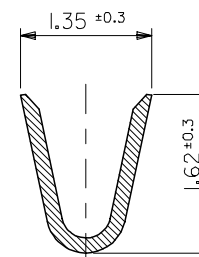
10 9 8 7 6 5 4 3 2 1

注記
NOTES

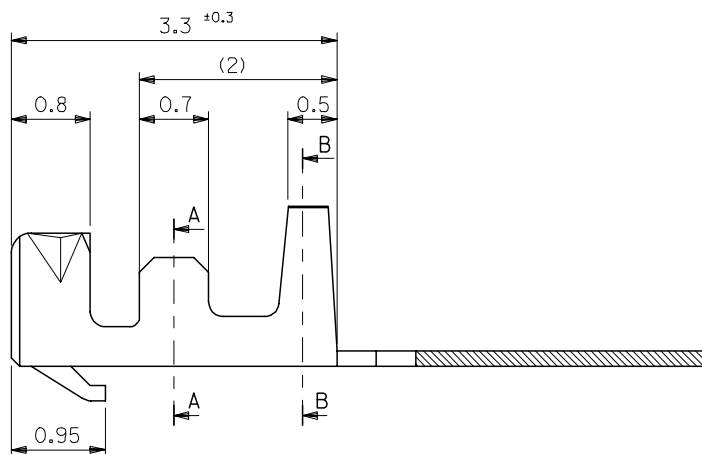
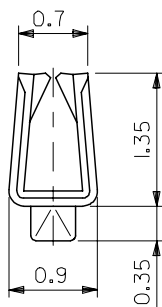
1. 適合ハウジング: 51021シリーズ
APPLICABLE HOUSING: 51021 SERIES
2. メッキ仕様 PLATING
錫 0.9μm MIN. リフロー処理 (前メッキ)
TIN 0.9μm MIN. REFLOW TREATMENT (PRE-PLATED)



SECT. A-A



SECT. B-B



50079-8100	バラ状 LOOSE
50079-8000	連鎖状 CHAIN
MATERIAL NO.	端子形状 FORM

MODEL NO. 50079-8*00

材料 MATERIAL	リン青銅 (t=0.15) PHOSPHOR BRONZE
仕上げ FINISH	—#—
適用電線範囲 WIRE RANGE	AWG #26-28
被覆外径 INS. RANGE	φ0.5-1.04

REVISED EC NO: J2005-1535 DRAWN: SUZUKI CHKD: KATO APPR: NUKITA	2004/11/30 2004/11/30 2004/12/06
DESCRIPTION	
REV	G

GENERAL TOLERANCES
(UNLESS SPECIFIED)

10 UNDER	±0.2
10 OVER 30 UNDER	±0.25
30 OVER	±0.3
ANGULAR	±3 °

DRAFT WHERE APPLICABLE
MUST REMAIN
WITHIN DIMENSIONS

DIMENSION STYLE
MM ONLY

DRAWN BY HHIRAMOT	DATE 92/10/21
CHECKED BY SKUNISHI	DATE 98/07/07
APPROVED BY MFUKUSHI	DATE 98/07/07

MATERIAL NO.

SIZE
A3

SCALE
20:1

DESIGN UNITS
METRIC

THIRD ANGLE
PROJECTION

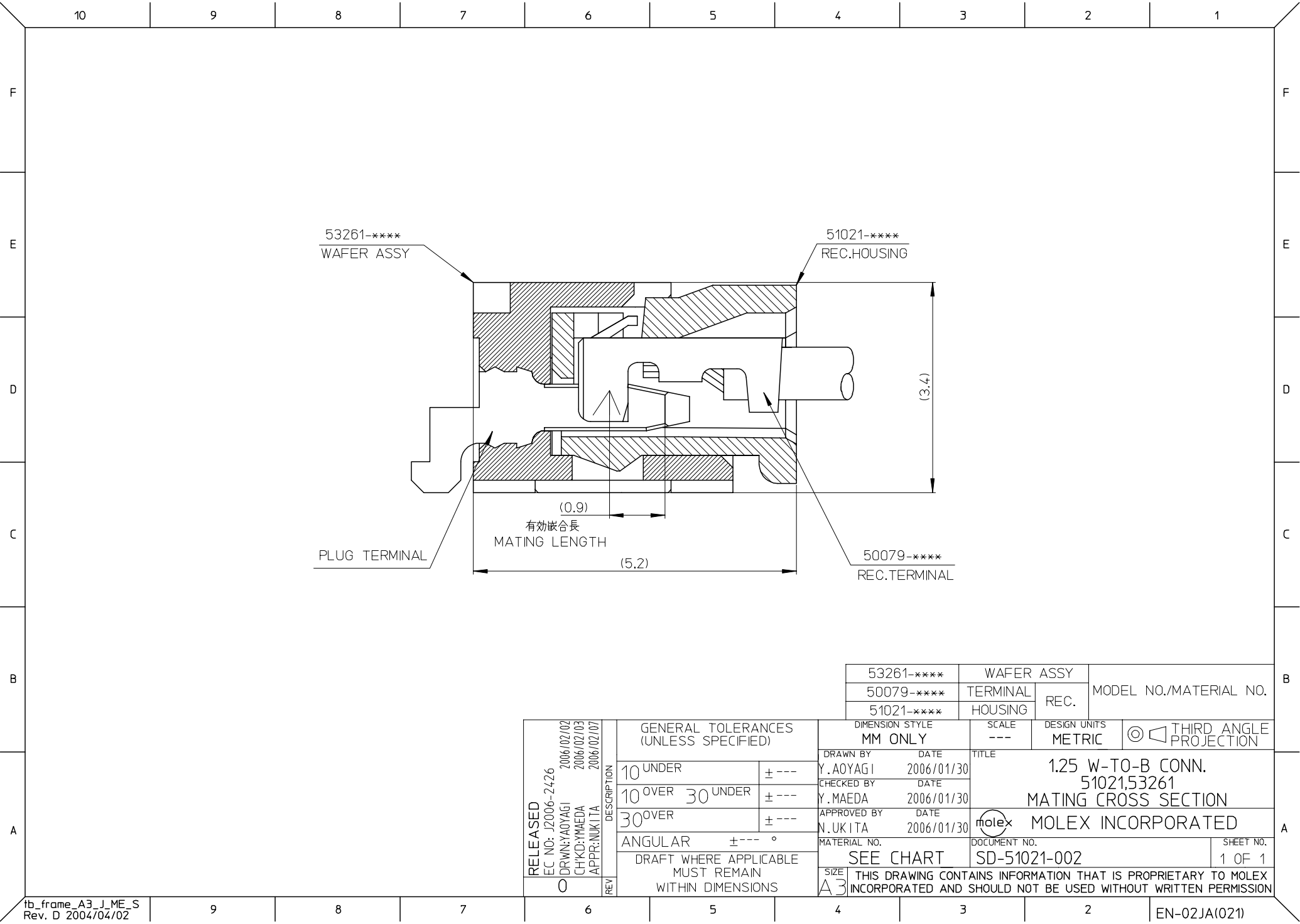
TITLE
1.25 WIRE TO BOARD CONN.
CRIMP REC. TERMINAL
-LEAD FREE-

MOLEX INCORPORATED

DOCUMENT NO.
SD-50079-001

SHEET NO.
1 OF 1

THIS DRAWING CONTAINS INFORMATION THAT IS PROPRIETARY TO MOLEX
INCORPORATED AND SHOULD NOT BE USED WITHOUT WRITTEN PERMISSION



53261-****	WAFER ASSY	MODEL NO./MATERIAL NO.
50079-****	TERMINAL	
51021-****	HOUSING	

RELEASED EC NO: J2006-2426 DRWN:YA0YAGI 2006/02/02 CHKD:YMAEDA 2006/02/03 APPR:NUKITA 2006/02/07 REV 0	DESCRIPTION	GENERAL TOLERANCES (UNLESS SPECIFIED)		DIMENSION STYLE MM ONLY		SCALE ---	DESIGN UNITS METRIC	THIRD ANGLE PROJECTION		
		10 UNDER	± ---	Y.AOYAGI	2006/01/30	TITLE 1.25 W-TO-B CONN. 51021,53261 MATING CROSS SECTION				
		10 OVER 30 UNDER	± ---	Y.MAEDA	2006/01/30					
		30 OVER	± ---	N.UKITA	2006/01/30	MOLEX INCORPORATED				
		ANGULAR ±--- °		MATERIAL NO.			DOCUMENT NO.			SHEET NO.
		DRAFT WHERE APPLICABLE MUST REMAIN WITHIN DIMENSIONS		SEE CHART			SD-51021-002			1 OF 1
	REV	THIS DRAWING CONTAINS INFORMATION THAT IS PROPRIETARY TO MOLEX INCORPORATED AND SHOULD NOT BE USED WITHOUT WRITTEN PERMISSION								